



## 4,232 sf of Ground Level Commercial Space Remaining

### Lease Rate: Varies per suite

#### Property Highlights

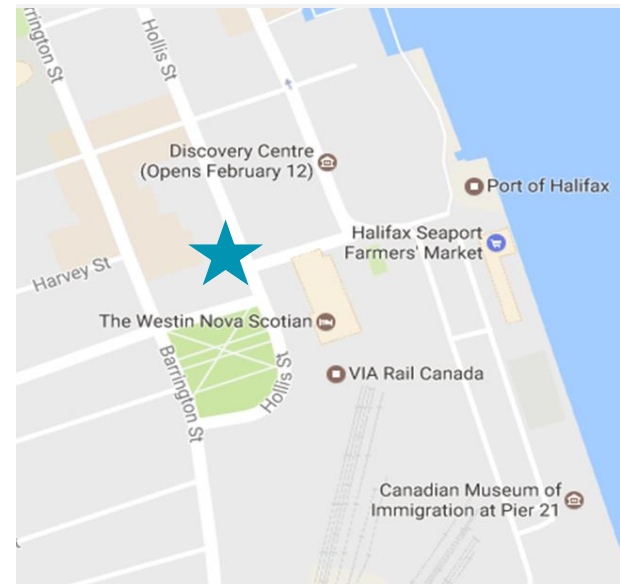
- New development scheduled for 2018 completion
- 4,232 sf of ground commercial retail space at grade with multiple store fronts that line both South and Hollis Streets, giving pedestrians a great streetscape experience
- Excellent signage opportunity
- 63 residential units above with a fully landscaped rooftop
- 2 levels of underground parking will be available on site

#### What This Property Can Offer Your Business

- This property offers a high-street retail shopping & dining experience to area residents, in Halifax's South End. These commercial retail units feature great retail frontage and large display windows.

#### Area Amenities

- Nearby and neighbouring tenants include: Halifax Seaport Farmers' Market, Via Rail Canada, The Westin Nova Scotian, Atlantic Superstore, Spring Garden Road Shopping District, and a variety of restaurants and cafés.



For more information, please contact:

**Bill MacAvoy**

Direct: 902 425 1872

Mobile: 902 880 0445

[bmacavoy@cwatlantic.com](mailto:bmacavoy@cwatlantic.com)

**Cushman & Wakefield Atlantic**  
601-5475 Spring Garden Road  
Halifax, Nova Scotia B3J 3T2  
+1 902 425 1444  
[cwatlantic.com](http://cwatlantic.com)

## Location Information

- This property is ideally located in the South End of Halifax Peninsula, fronting the corner of South Street and Hollis Street. Boasting a strategic location with excellent viability, this space is ideal for traditional or service retail, private health services and/or boutique professional offices. With plenty of vehicular and pedestrian traffic and on and off street parking, this space is ready for your business!
- This property offers close proximity to numerous amenities including: over 200 retail shops, Park Lane Mall, Spring Garden Place, small boutiques and small personalized services, over thirty restaurants and cafés, universities, hospitals, the newly developed Halifax Public Library and the well known Halifax's Seaport Farmers' Market.
- There are many conveniently located parking spaces in the area meaning you can park your car and stroll on foot to take in the street's charming shops and attractions.

## About the South End Area

- The South End is well known as the wealthy part of the peninsula and does hold private schools, private clubs, and some million-dollar houses.
- Approximately 20,000 people live within 1 KM of the subject property, expanding to 50,000 during the university calendar year, with this number growing rapidly.
- Located on the peninsula of Halifax close to Saint Mary's University, Dalhousie University, the hospitals and minutes away from downtown Halifax.



For more information, please contact:

**Bill MacAvoy**

Direct: 902 425 1872

Mobile: 902 880 0445

[bmacavoy@cwatlantic.com](mailto:bmacavoy@cwatlantic.com)

**Cushman & Wakefield Atlantic**

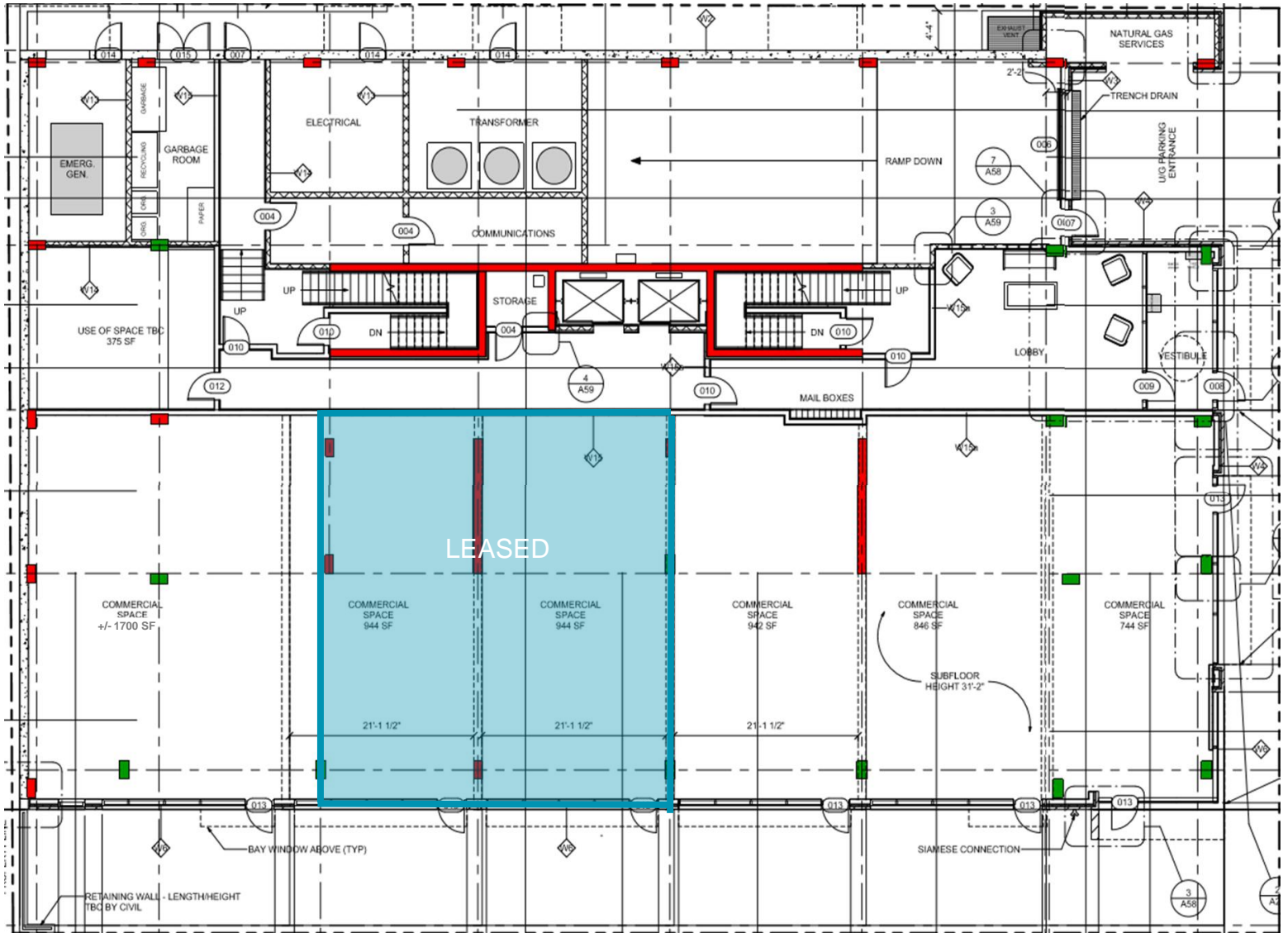
601-5475 Spring Garden Road

Halifax, Nova Scotia B3J 3T2

+1 902 425 1444

[cwatlantic.com](http://cwatlantic.com)

Ground Floor Plan



For more information, please contact:

**Bill MacAvoy**  
Direct: 902 425 1872  
Mobile: 902 880 0445  
[bmacavoy@cwatlantic.com](mailto:bmacavoy@cwatlantic.com)

**Cushman & Wakefield Atlantic**  
601-5475 Spring Garden Road  
Halifax, Nova Scotia B3J 3T2  
+1 902 425 1444  
[cwatlantic.com](http://cwatlantic.com)